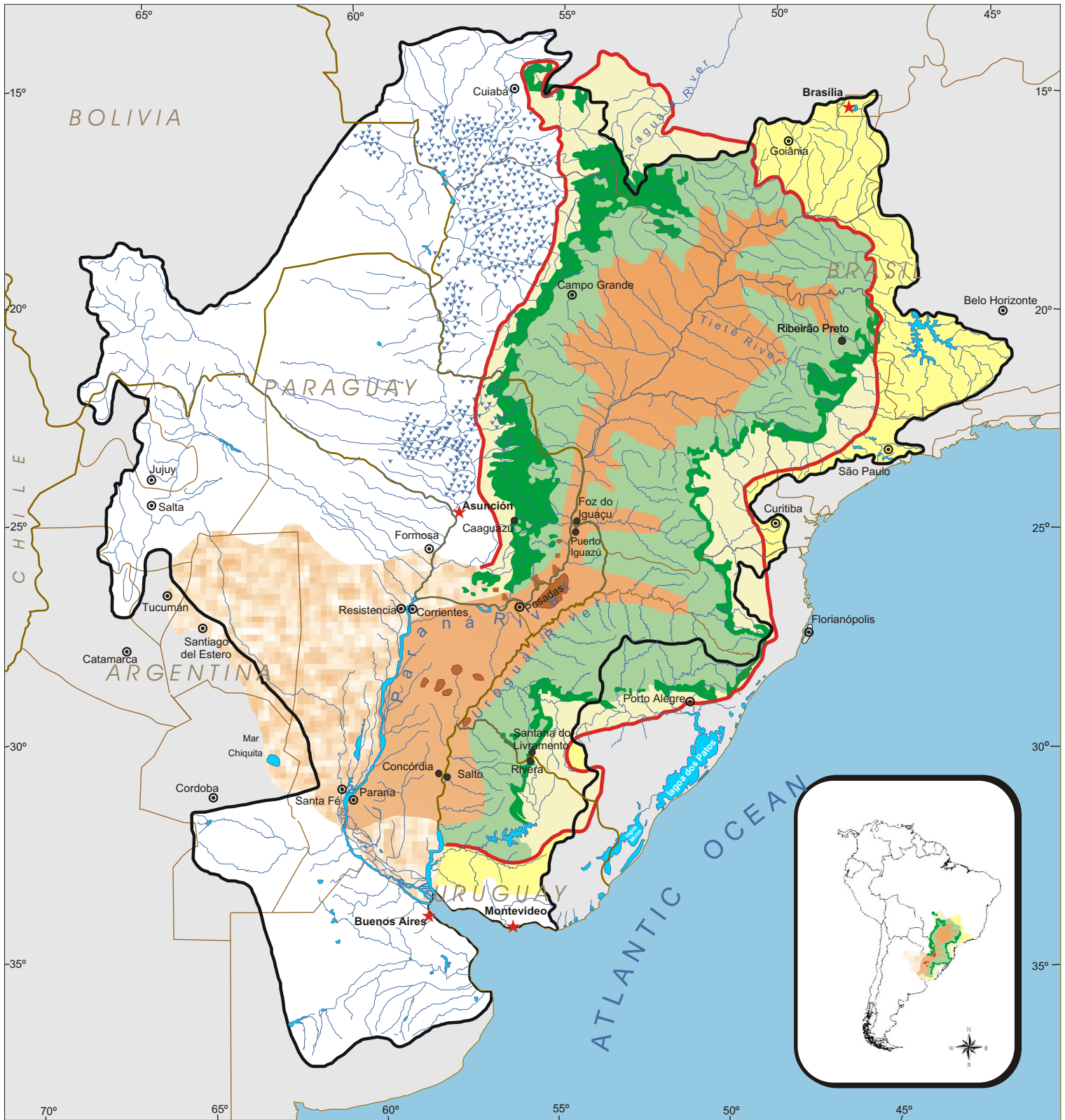


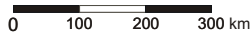
SCHEMATIC MAP OF THE GUARANI AQUIFER SYSTEM



LEGEND

- | | |
|---|-------------------------------|
| Drainage water do not related to the Guarani (no belonging to the system) | Prata watershed basin limit |
| Potential indirect recharge areas | Paraná geological basin limit |
| From surface runoff | Rivers |
| from underground flows | Wetlands |
| Potential direct recharge areas | International Boundaries |
| porous regime: Guarani outcrops | State/Provincial Boundaries |
| fractured/porous regime: basalts and sandstones | Cities |
| Potential discharge areas | State/Province Capitals |
| porous regime: Guarani outcroppings | National Capitals |
| fractured/porous regime: basalts and sandstones | |
| fractured/porous regime (relation to Guarani to be defined) | |

Approximated Scale: 1:13.600.000



Notes:

- Schematic map produced by CAS/SRH/MMA (UNPP/Brazil) approved by the Project Steering Committee - Project for the Environmental Protection and Sustainable Development of the Guarani Aquifer System (Argentina, Brazil, Paraguay, Uruguay - GEF/World Bank - OAS).
- Colored portions represent the areas which, potentially, belong to the Guarani Aquifer System. The aquifer limits are not completely defined in Argentina and Paraguay.

Sources:

- South America Hydrogeological Map, 1996, DNP/CPRM/Unesco.
- Guarani Aquifer Hydrogeological Map, 1999, Campos H.C.
- Map of Geological Integration of the Plata Basin, 1998, Mercosul/SGT2.
- Map of hydrogeological integration of the Plata Basin, in elaborating, Mercosul/SGT2.
- Geological Map of Brazil, 2nd Edition, 1995, MME/DNPM.
- Geological Map of Rio de la Plata Basin, 1970, OEA.